

Living Shorelines: From Planning to Monitoring Success

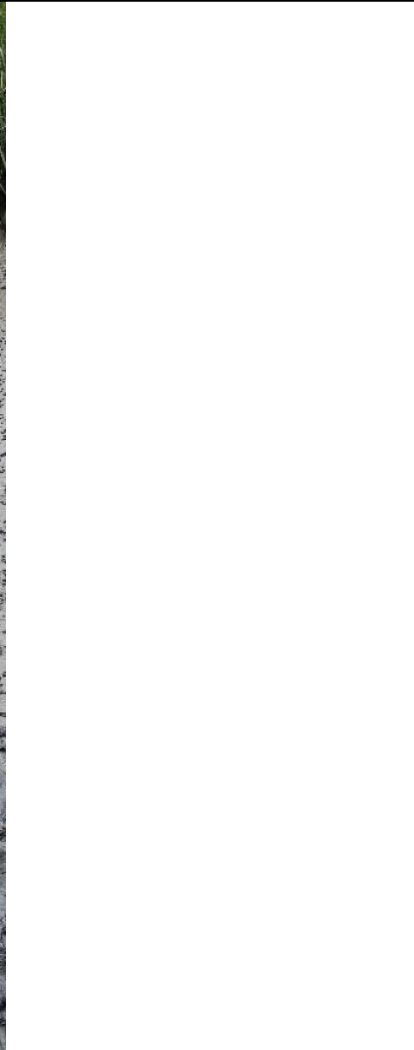


"...and this glorious cliff-top property has recently been reduced by fifty per-cent."



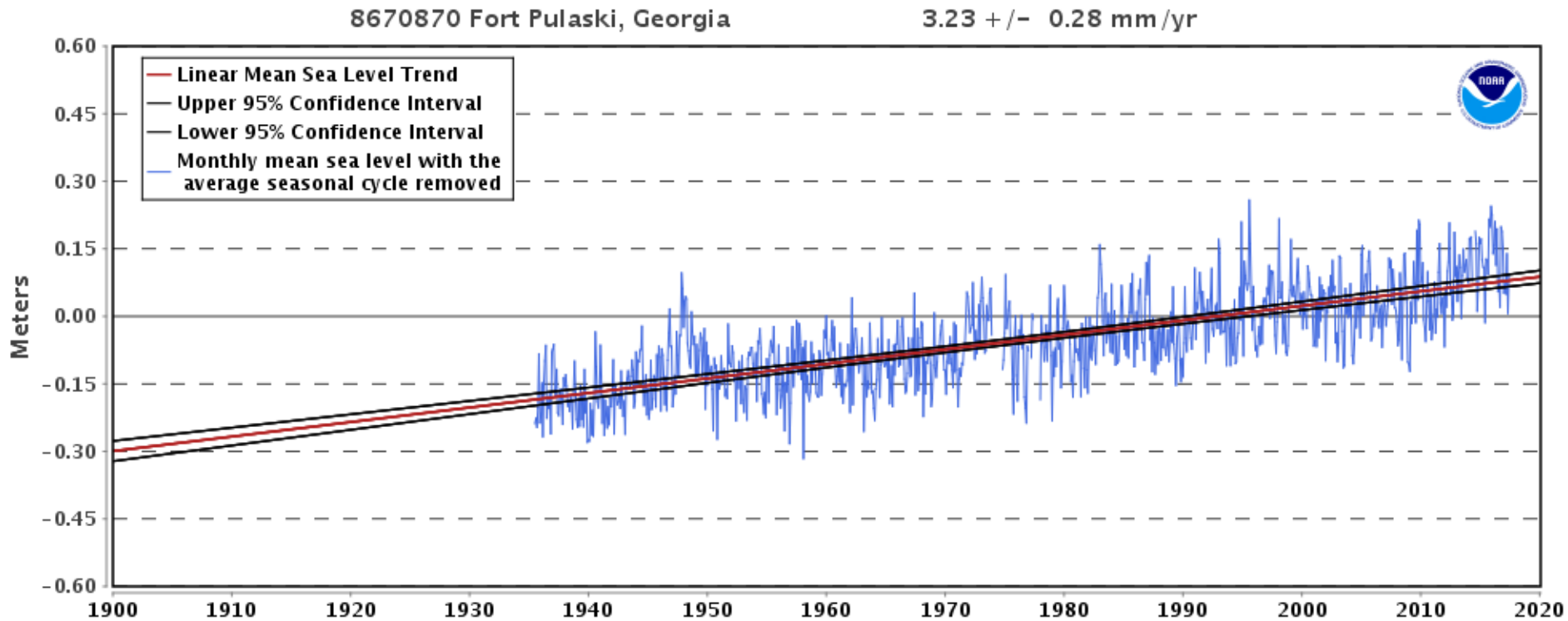
"Awesome erosion!"

Georgia tidal marsh soils



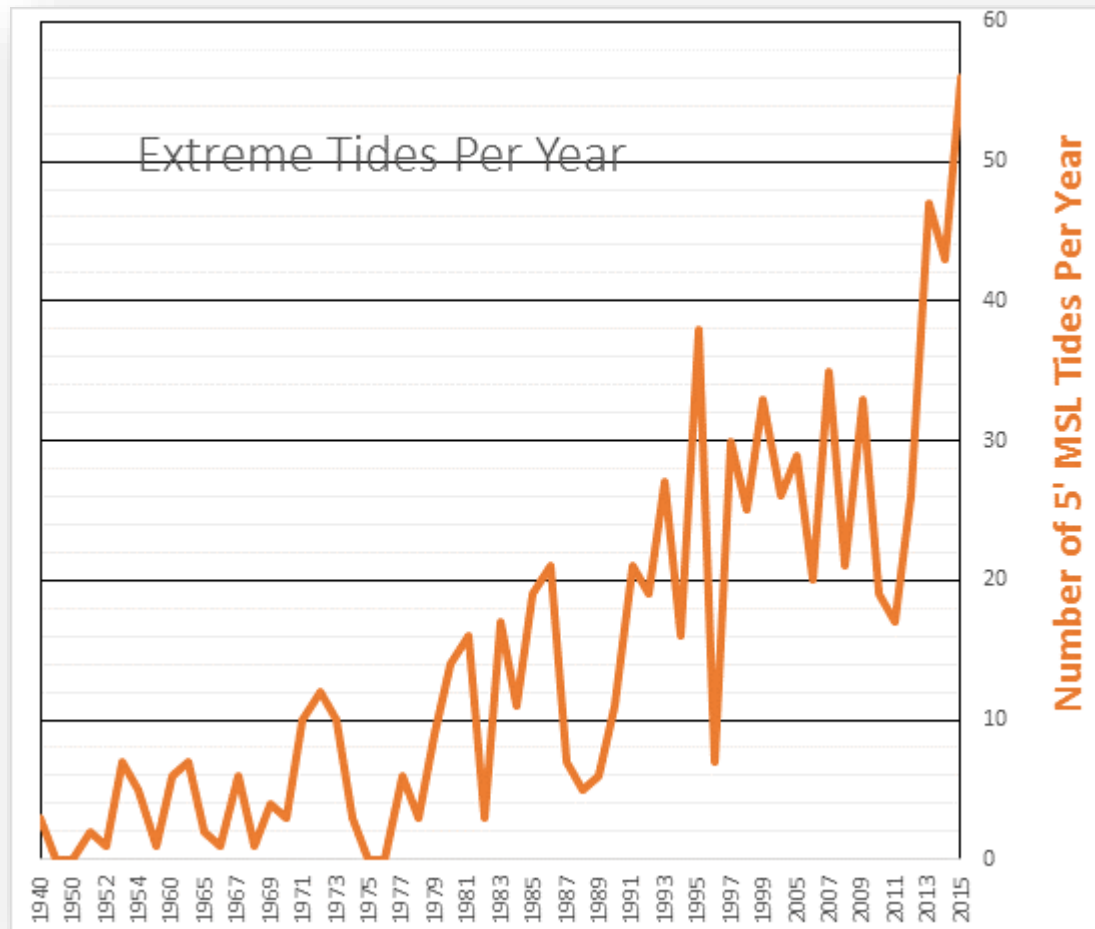
**Georgia Department of Natural Resources
Coastal Resources Division**

Sea level rise



The mean sea level trend is 3.23 millimeters/year with a 95% confidence interval of $\pm 0.28 \text{ mm/yr}$ based on monthly mean sea level data from 1935 to 2016 which is equivalent to a change of 1.06 feet in 100 years.

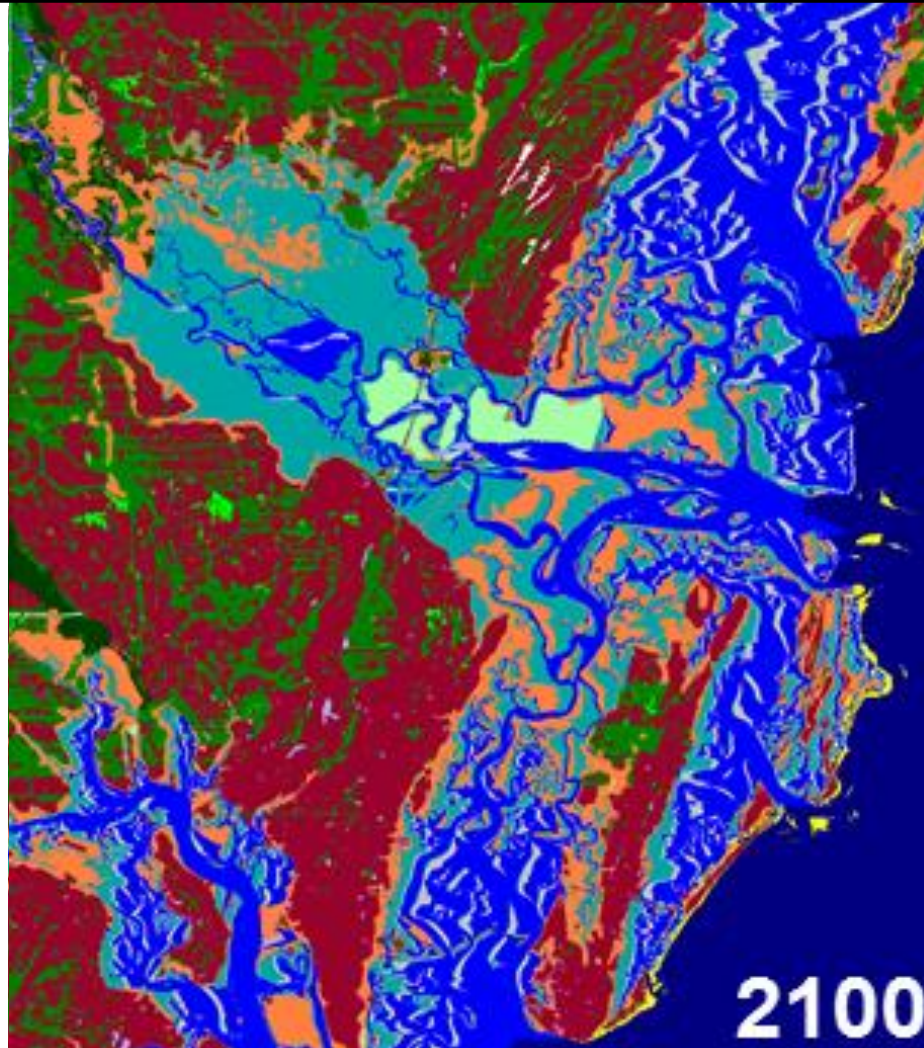
Sea level rise



Georgia Department of Natural Resources
Coastal Resources Division

Sea level rise

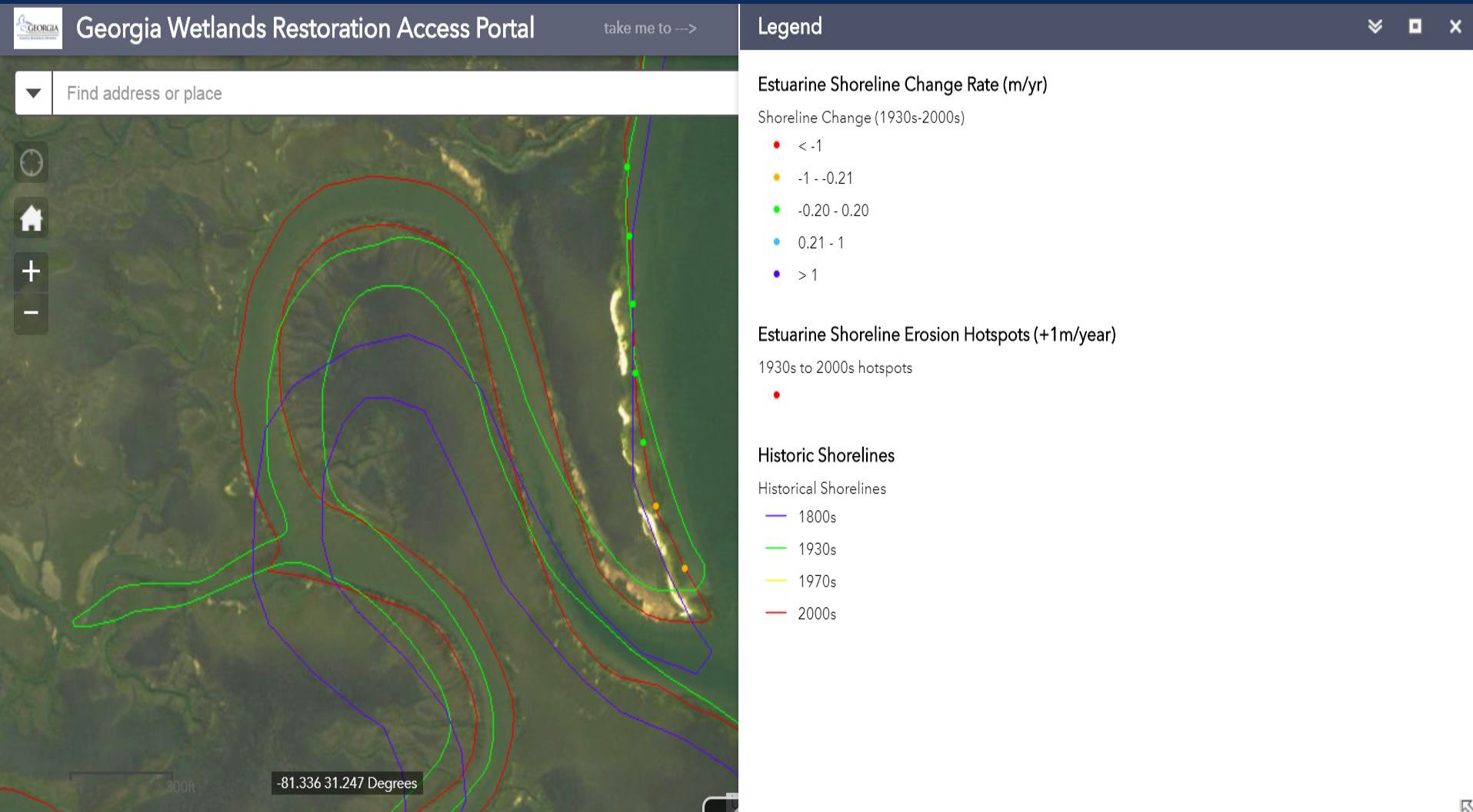
SLAMM Model
predictions to
changes in
habitat types
using
vegetation as
an indicator



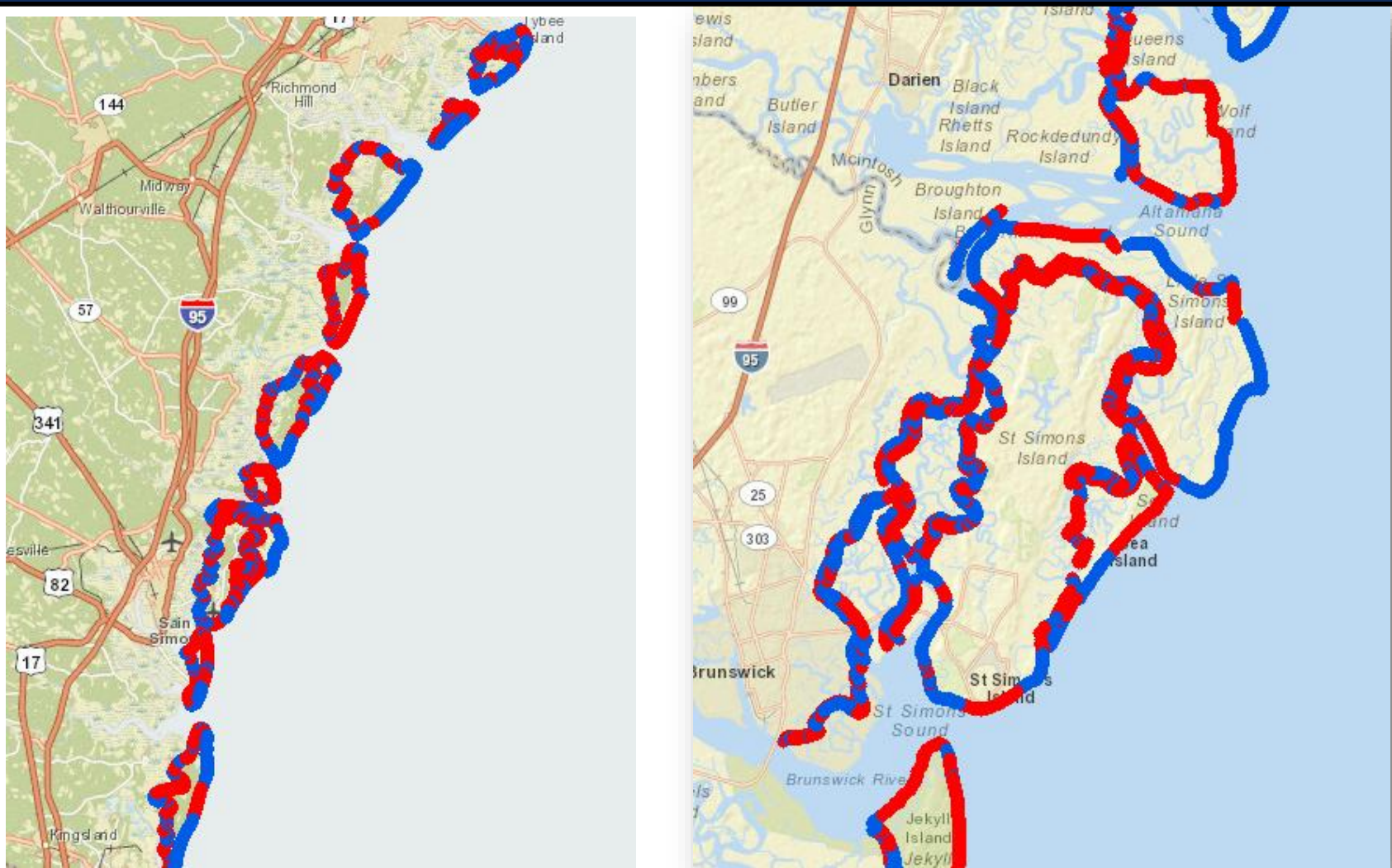
Legend	
Dev. Dry Land	
Undev. Dry Land	
Hardwood Swamp	
Cypress Swamp	
Inland Fresh Marsh	
Tidal Fresh Marsh	
Transitional Salt Marsh	
Saltmarsh	
Mangrove	
Estuarine Beach	
Tidal Flat	
Ocean Beach	
Ocean Flat	
Rocky Intertidal	
Inland Open Water	
Riverine Tidal	
Estuarine Open Water	
Tidal Creek	
Open Ocean	
Brackish Marsh	
Tall Spartina	
Freshwater Shore	
Tidal Swamp	
Blank	

Shoreline change

Dr. Chester Jackson – Georgia Southern University



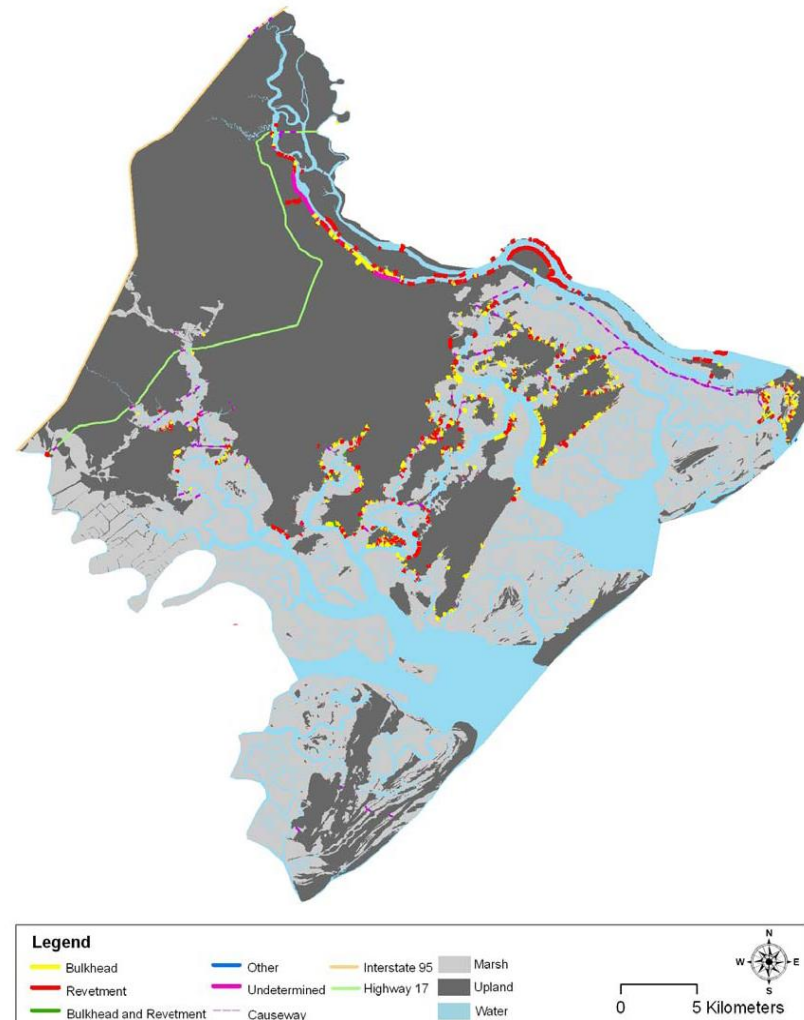
Shoreline change



Georgia Department of Natural Resources
Coastal Resources Division

Shoreline armoring

Dr. Clark Alexander – Skidaway Institute of Oceanography



Georgia Department of Natural Resources
Coastal Resources Division

Traditional stabilization methods



**Georgia Department of Natural Resources
Coastal Resources Division**

Natural estuarine shorelines



Georgia Department of Natural Resources
Coastal Resources Division

Innovative Techniques



**Georgia Department of Natural Resources
Coastal Resources Division**

Ashantilly



**Georgia Department of Natural Resources
Coastal Resources Division**

Ashantilly



**Georgia Department of Natural Resources
Coastal Resources Division**

Ashantilly



**Georgia Department of Natural Resources
Coastal Resources Division**

Long Tabby



**Georgia Department of Natural Resources
Coastal Resources Division**



Long Tabby



**Georgia Department of Natural Resources
Coastal Resources Division**

Little St. Simons



**Georgia Department of Natural Resources
Coastal Resources Division**

Little St. Simons



**Georgia Department of Natural Resources
Coastal Resources Division**

Skidaway State Park



Georgia Department of Natural Resources
Coastal Resources Division

Cannon's Point Preserve



Georgia Department of Natural Resources
Coastal Resources Division

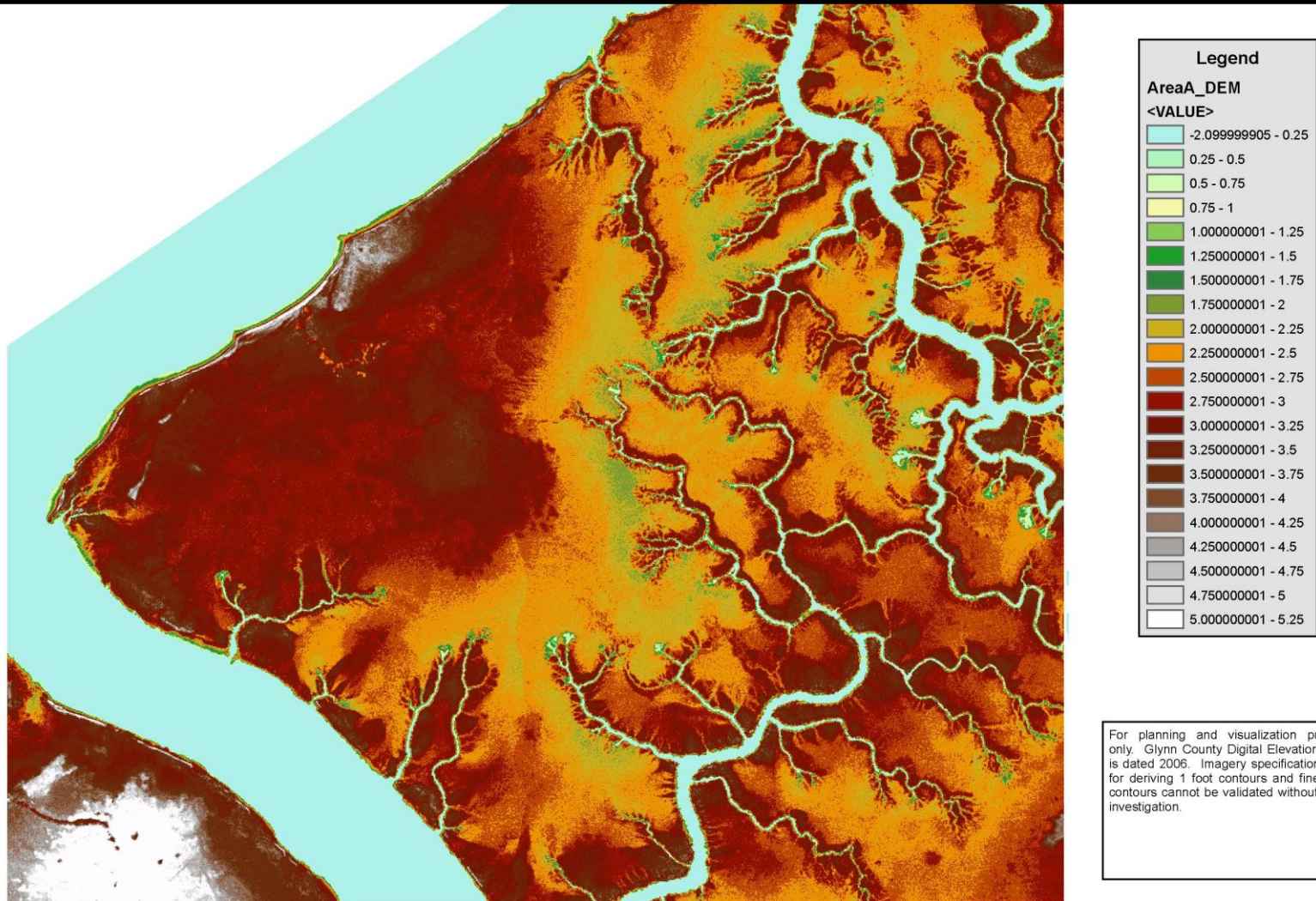
Living Shorelines Work Group



Partners dedicated to the long term documentation and success of living shoreline projects in Georgia.

**Georgia Department of Natural Resources
Coastal Resources Division**

TLP



Georgia Department of Natural Resources
Coastal Resources Division

Thank you

Jan Mackinnon
Biologist and Program Manager
Coastal and Ocean Management Program

Georgia Department of
Natural Resources

Coastal Resources Division

One Conservation Way
Brunswick, GA 31520
(912) 264-7218
jan.mackinnon@dnr.ga.gov